



## Orlando Health PGY-2 Emergency Medicine Pharmacy Residency

The PGY-2 Emergency Medicine Pharmacy Residency at Orlando Health is a one-year post-graduate training program designed to develop essential knowledge and skills for contemporary health-system pharmacy practice. The residency program provides flexibility to adapt to the resident's specific learning needs and goals. Training is provided through rotational and longitudinal experiences.

Graduates of the Orlando Health PGY-2 Emergency Medicine Pharmacy Residency will be competent and confident practitioners of pharmaceutical care in multiple patient care environments, assuring safe, effective and appropriate drug therapy.

All of the required clinical rotations will be conducted at Orlando Regional Medical Center (ORMC) and Arnold Palmer Medical Center (APMC). Elective rotations could take place at ORMC, APMC, Winnie Palmer Hospital for Women & Babies (WPH), or other facilities within the Orlando Health system.

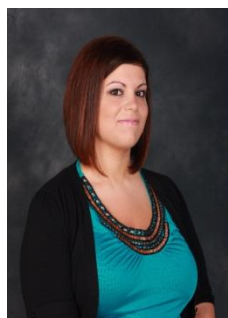
### Goals of the Residency

*Graduating PGY-2 Emergency Medicine Pharmacy Residents will:*

1. Assure safe, effective, appropriate drug therapy and prevent, identify, and resolve drug related problems.
2. Present as a competent, confident, and compassionate practitioner and set and reassess goals.
3. Demonstrate a commitment to the advancement of the profession and continued personal growth.
4. Possess comprehensive health-system pharmacy skills that promote future professional growth.
5. Create, promote, and participate as a part of a multidisciplinary healthcare team.
6. Demonstrate the ability to identify opportunities for improvement within a practice and practice site.
7. Provide education to professional and non-professional audiences, utilizing effective communication skills.
8. Demonstrate a foundation of leadership skills in pharmacy practice.

### Residency Director

**Deba Rihani, Pharm.D., BCPS, BCCCP**  
**Director, PGY-2 Emergency Medicine Pharmacy Residency**  
**Clinical Pharmacist, Pharmacy Services**



**Education:** Pharm.D., University of New Mexico College of Pharmacy, Albuquerque, NM (2009)

**Training:** PGY-1 Pharmacy Practice Residency (2009-2010) & PGY-2 Critical Care Residency (2010-2011) at Orlando Regional Medical Center, Orlando, FL

**Interest Areas:** Emergency Medicine, Toxicology, Infectious Diseases, Trauma

**Email:** [Deba.Rihani@orlandohealth.com](mailto:Deba.Rihani@orlandohealth.com)

## Residency Coordinator

**Brandon Huang, Pharm.D., BCCCP**  
**Coordinator, PGY-2 Emergency Medicine Pharmacy Residency**  
**Clinical Pharmacist, Adult Emergency Medicine**



**Education:** Pharm.D., University of Florida College of Pharmacy, Orlando, FL (2011)

**Training:** PGY-1 Pharmacy Practice Residency (2014-2015) & PGY-2 Critical Care Residency (2015-2016) at Orlando Regional Medical Center, Orlando, FL

**Interest Areas:** Emergency Medicine, Ketamine, Toxicology, Emergency Preparedness, Stroke

**Email:** [Brandon.Huang@orlandohealth.com](mailto:Brandon.Huang@orlandohealth.com)

## Required and Elective Rotations

### Required Rotations:

- Critical Care Medicine (1 month)
- Emergency Medicine (4 months)
- Emergency Medicine – Community (1 month)
- Orientation (1 month)
- Pediatric Emergency Medicine/ Pediatric Critical Care (1 month)
- Research (1 month)
- Surgical Critical Care (1 month)
- Elective experiences (2 months)

### Elective Rotations:

- Adult Infectious Diseases
- Cardiovascular Critical Care
- Neuro Critical Care
- Rapid Response Team
- Toxicology
- Trauma/General Surgery
- Women's Obstetrics/Gynecology

## Additional Required Activities

- **Emergency Medicine Practice Research Project**
  - Design and conduct a project to develop or enhance an aspect of patient care specific to emergency medicine patients
  - Present results at the Florida Residency Conference
  - Prepare a manuscript suitable for publication
- **Evidence-Based Medicine Guideline / Protocol / Order Set**
  - Develop an evidence-based medicine guideline / protocol / order set related to individual and/or population-based care of emergency medicine patients
- **Quality Improvement Project or Medication Use Evaluation**
- **Newsletter article**
- **Seminar**
  - Prepare and present a 1-hour ACPE-accredited seminar focusing on a controversial emergency medicine pharmacotherapy issue
- **Residency Case-Presentation**
  - Present a 1-hour ACPE-Accredited CE patient-case based topic review
- **Didactic Teaching Experience**
  - Opportunities will be provided for the resident to develop / give lectures to medical students and / or pharmacy students throughout the year.
  - Additional opportunities may be available in conjunction with the University of Florida College of Pharmacy Orlando Campus.

- **PGY-2 Pharmacy Journal Club**
  - Organize and participate in bi-annual PGY-2 journal club
- **Emergency Medicine Administration** (Longitudinal Learning Experience)
- **Code Blue 90 Coverage**
- **Residency Leadership Position**

## Weekend Experiences

### Pharmacy Operations

- Serve as a clinical staff pharmacist in the Emergency Department (ED) at ORMC
- 12 hour shifts every fourth weekend
- Responsibilities:
  - Processing medication orders
  - Answering drug information questions from health-care professionals
  - Responding to all emergency alerts in the ED
  - Comprehensive monitoring of vancomycin and aminoglycosides

## PGY-2 Emergency Medicine Pharmacy Residency Preceptors

### PGY-2 Emergency Medicine Residency Preceptors:

- Marlena Fox, PharmD, BCPS, BCCCP
- Amanda Giancarelli, PharmD, CNSC, BCCCP
- Brandon Hobbs, PharmD, BCPS
- Brandon Huang, PharmD, BCCCP
- Deba Rihani, PharmD, BCPS, BCCCP
- Susan Norman, PharmD, BCPS, BCPPS
- Megan Veverka, PharmD, BCPS, BCPPS

### Additional Elective Preceptors:

- Kara Birrer, PharmD, BCPS
- Nicole Campbell, PharmD, BCPS
- William Carothers, PharmD , BCCCP
- Susanna Holms, PharmD
- Shauna Jacobson, PharmD, BCPS

## Program Specifics

### ASHP Residency Directory Information

- Duration: **12 months**
- Rotations:
  - 1 month orientation (July)**
  - 9 required rotations**
  - 2 elective rotations**
- Number of Positions: **1**
- Total # of Residents at Institution: **9**
- Starting Date: **July 1**
- Estimated Stipend: **~\$50,400** (no state income tax)
- Interview Required: **Yes**
- Training Site: **Orlando Health Hospitals**
- Practice Setting: **Community Teaching**
- Total Beds: **2,295 beds (Orlando Health System)**

### Residency Program Benefits

- Monogrammed Lab Coat
- Free Parking
- Discounted Meals
- Resident Office Space
  - Desk with personal computer
  - Laptop computer for patient care rounds
- Reduced Professional Membership Fees
- Reduced Meeting Registration Fees
- Travel Reimbursement for the following meetings:
  - American College of Emergency Physicians Scientific Assembly or similar meeting
  - ASHP Midyear Clinical Meeting
  - Florida Residency Conference
- Pharmacy Continuing Education

### **Additional Residency Program Benefits**

- Available benefit programs:
  - Medical
  - Dental
  - Vision
  - Liability
  - Life
  - Disability
  - Retirement
- 144 Hours of Paid Time Off
  - Vacation/Holiday
  - Interviews
  - Minor Sick
- 40 Hours of Extended Leave Bank

### **Orlando Health Pharmacy Residency Basics**

- Employment as a pharmacy resident at Orlando Health is contingent upon the following:
  - Obtaining a Florida Pharmacist license by September 1 of the residency year  
Florida Board of Pharmacy Website: [www.doh.state.fl.us/mqa/pharmacy/ph\\_home.html](http://www.doh.state.fl.us/mqa/pharmacy/ph_home.html)
  - Completion of the Orlando Health pre-employment physical
  - A negative drug test including cotinine (a metabolite of nicotine)
- The Resident Learning System (RLS) is used to direct learning.
- A residency advisor is assigned to mentor the resident throughout the year.
- Advisors are also selected to assist the resident with completion of their projects (See Additional Required Activities).